



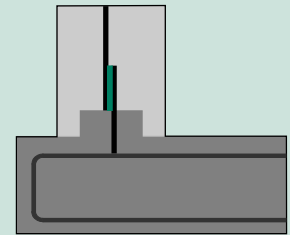
Cetflex ACS - is a bentonite tape covered with a self-soluble organic foil which prevents bentonite from swelling too early.

ACS application in sealing:

- point of contact of two metal sheets
- connection of RCC elements
- tube passages in wall
- connection of RCC with metal structures

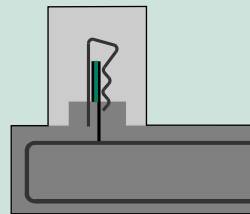
10cm of ACS is as effective a barrier for water as 10cm minimum wall thickness.

Application

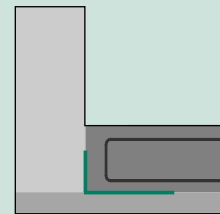


Application

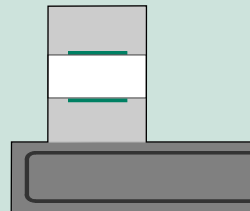
Active Seal where metal sheets connect.



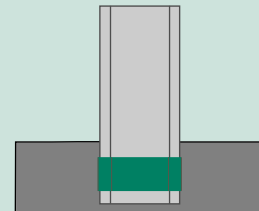
Surface seal between two RCC elements.



Hydrophilic Seal.



Puddle Flange.



Elements:



ACS bentonite in a roll.

Fitting clip



KA 25/3

Technical data of ACS

Material:	Bentonite	Swelling time:	≥ 15days
Thickness:	2 mm	Swelling pressure:	≤ 45 kPa
Bentonite density:	1,653 g/m ³	Max.swelling:	200 %

Article number	Type	Kind of material	Width [cm]	Quantity m/roll	Quantity pieces/pack
206-01	ACS 100	tape	10	10	10
206-02	ACS 250	tape	25	10	10
206-03	ACS 500	tape	50	10	10
206-04	ACS 1000	tape	100	10	10
207-03	KA 25/3	clip	-	-	50